

ThermTec

WILD-D Series

Thermal Imaging Monocular

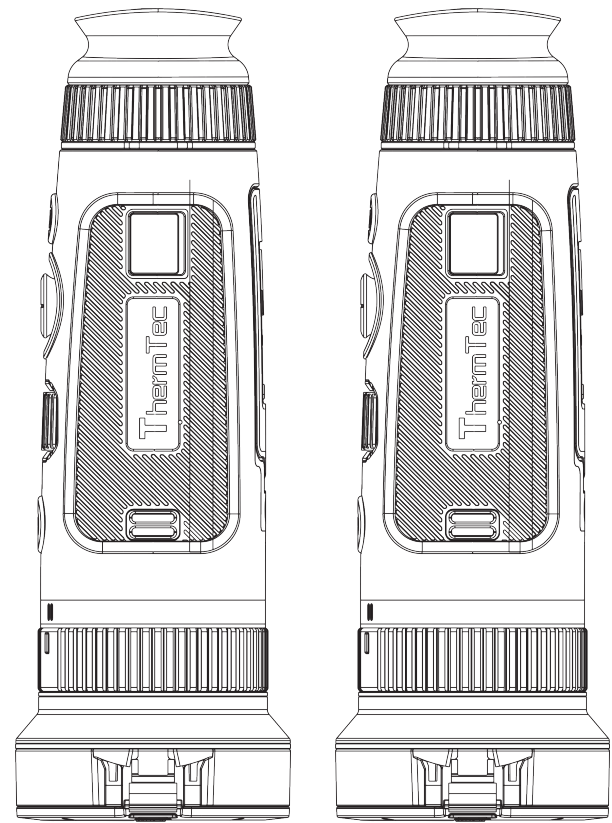
Wild-D Series User Manual



Download on the
App Store

GET IT ON
Google Play





Content

About This Manual	05	3.3.3.2 AI Ranging	13
Regulatory Information	06	3.3.3.3 Pseudo Color Switch	13
1. Introduction	07	3.3.3.4 Target Outline Mode	14
1.1 Device Description	07	3.3.4 Capture/Record	15
1.2 Features	07	3.4 Set	15
1.3 Application Scenarios	07	3.4.1 Setting	15
1.4 Appearance	08	3.4.2 System Setting	17
2. Packing List	09	3.4.3 Network Connection	24
3. Operation Guide	10	3.4.3.1 App Download	25
3.1 Charging	10	3.4.3.2 Connect via Hotspot	25
3.2 Power on/off	11	3.4.4 File Management	26
3.3 Buttons and Controls	11	3.5 External Video & Data Reading	28
3.3.1 Buttons Combinations and Introduction	11	3.6 System Software Upgrade	28
3.3.2. Lens Adjustment	12	4. Technical Data	30
3.3.3 Joystick Operation	13	4.1 Product Size & Drawing	30
3.3.3.1 Zoom	13	4.2 Specifications	31

About This Manual

COPYRIGHT © 2024 ThermTec Technology Co., Ltd. ALL RIGHTS RESERVED.

Any and all information, including, among others, wording, pictures, graphs are the properties of ThermTec Technology Co., Ltd. or its subsidiaries (hereinafter referred to as “ThermTec”). This user manual (hereinafter referred to be “the Manual”) cannot be reproduced, changed, translated, or distributed, partially or wholly, by any means, without the prior written permission of ThermTec. Unless otherwise stipulated, ThermTec does not make any warranties, guarantees or representations, express or implied, regarding to the Manual.

This Manual is applicable to Thermal Imaging Monocular.

The Manual includes instructions for using and managing the product. Pictures, charts, images, and all other information hereinafter are for description and explanation only. The information contained in the Manual is subject to change, without notice, due to firmware updates or other reasons.

The logo for ThermTec, featuring a stylized orange 'T' icon followed by the word 'ThermTec' in a black sans-serif font.The logo for WILD-D, featuring the word 'WILD-D' in a bold black sans-serif font, followed by a stylized 'D' icon that resembles a camera lens or a circular sensor.

Regulatory Information



This product and, if applicable, the supplied accessories are marked with “CE” and comply therefore with the applicable harmonized European standards listed under the Radio Equipment Directive 2014/53/EU, the EMC Directive 2014/30/EU, the RoHS Directive 2011/65/EU.



This product and - if applicable - the supplied accessories too are marked with “UKCA” and comply therefore with the following directives: Radio Equipment Regulations 2017, Electromagnetic Compatibility Regulations 2016, Electrical Equipment (Safety) Regulations 2016, the Restriction of the Use of Certain Hazardous Substances in Electrical and Electronic Equipment Regulations 2012.



This product and - if applicable - the supplied accessories too are marked with “RoHS” and comply therefore the requirements of Directive 2011/65/EU on the restriction of the use of certain hazardous substances in electrical and electronic equipment (“RoHS recast” or “RoHS 2”).



2012/19/EU (WEEE directive): Products marked with this symbol cannot be disposed of as unsorted municipal waste in the European Union. For proper recycling, return this product to your local supplier upon the purchase of equivalent new equipment, or dispose of it at designated collection points. For more information see: www.recyclethis.info.



Directive 2006/66/EC and its amendment 2013/56/EU (Battery Directive): This product contains a battery that cannot be disposed of as unsorted municipal waste in the European Union. See the product documentation for specific battery information. The battery is marked with this symbol, which may include lettering to indicate cadmium (Cd), lead (Pb), or mercury (Hg). For proper recycling, return the battery to your supplier or to a designated collection point. For more information see: www.recyclethis.info.

Introduction

1.1 Device Description

Wild-D Series Thermal Imaging Monocular is designed with NETD less than 18mK, and equipped with a 12μm uncooled infrared detector, a 1024x768 high-definition OLED display, as well as a variety of lenses with different focal lengths. With its AI image recognition algorithm, Wild-D ensures clear views over long distances, even in harsh environments, poor visibility, or total darkness, providing reliable and high-quality visuals for night activities. Additionally, it excels at observing moving targets and adapting to various outdoor environments, making it ideal for search and rescue missions, hunting, and more.

1.2 Features

- 12μm Uncooled Infrared Detector, NETD less than 18mK;
- 1x--4x Continuous Digital Zoom;
- AI Distance Measurement;
- Various Pseudo Colors;
- Joystick Control and Wheel Focusing: Easy to One-Hand Operation;
- Detector Anti-Burn Mechanism;
- Super Large Aperture: Enhanced Capability for Temperature Radiation Capturing;
- 1024*768 Resolution with 0.39-inch OLED display;
- Up to 10 Hours of Continuous Working Life with Li-ion Battery

1.3 Application Scenarios

- Animal Observation
- Outdoor Adventure
- Law Enforcement Security
- Emergency Search and Rescue

1.4 Appearance

- ① Lens cover
- ② Power button
- ③ Focusing knob
- ④ Joystick
- ⑤ Capture/Record button
- ⑥ Diopter knob
- ⑦ Eyepiece cover
- ⑧ Compartment of replaceable battery
- ⑨ Type-C port
- ⑩ Dual FOV Switch



2 Packing List



WILD-D Series



Lens cloth (x1)



Monocular (x1)



User manual (x1)



Lanyard(x1)



Hand strap (x1)



Bag (x1)



Charger (X1)



USB cable (x1)



Lithium battery (X2)

3 Operation Guide

3.1 Charging

Here are two methods we could take to charge the device. **Device Charging** and **Battery Charging**.

Device Charging:

Connect the device and power adaptor directly with a type-C cable to power on the device. Alternatively, connect the device and PC to export files. Follow the below steps to charge the battery:



- Lift the cover from the USB port.
- Plug the cable provided into the USB port.
- Plug the opposite end of the cable into a USB power source.

Battery Charging:

Wild series have adopted replaceable and changeable battery design. The batteries could be taken off and charged directly, from which dramatically improves the device life.



Note:

- The battery should be fully charged prior to use.
- The battery is supposed to be taken out for long time non-using occasions.

3.2 Power on/off

Press and hold the power button to power on/power off the device.



3.3 Buttons and Controls

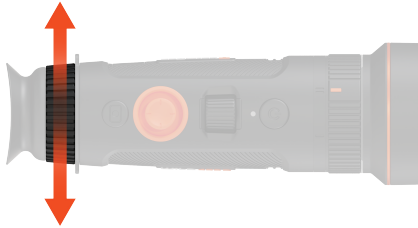
3.3.1 Buttons Combinations and Introduction

Before entering the main menu							
	Short Press		Long Press		Double Press		
Power Button	Standby Mode		On/Off		N/A		
Capture Button	Capture		Record		N/A		
Joystick	Up	Down	Left	Right		Center	
	Zoom in	Zoom out	AI Range finder	Short Push	Long Push	Brief Click	Double Click
				Pseudo Switch	Outline Mode	Calibration	Menu
After entering the main menu							
Joystick	Up	Down	Left	Right		Short Press	
	Move up	Move down	Exit sub-menu	Open Sub-menu		Confirm	

3.3.2. Lens Adjustment

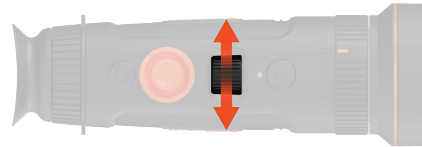
Diopter Adjustment

Looking through the eyepiece, adjust the position of diopter level to optimize the image sharpness on the OLED display.



Objective Lens Focusing

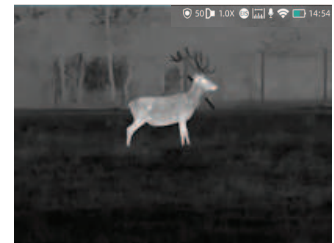
Manually adjust the objective lens focus when you can't see the scene clearly.



FOV Selection and Switch



Shift the FOV from
25° to 50°

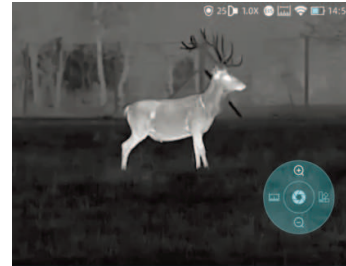


FOV Successfully Switched

3.3.3 Joystick Operation

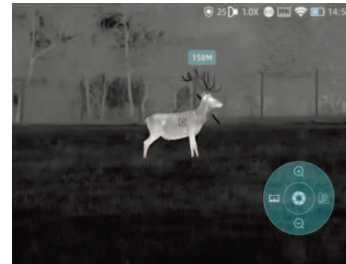
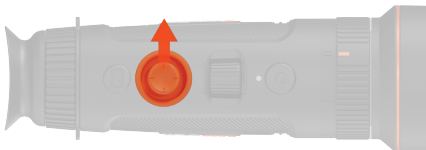
3.3.3.1 Zoom

Push the joystick to the front to zoom in, vice versa.



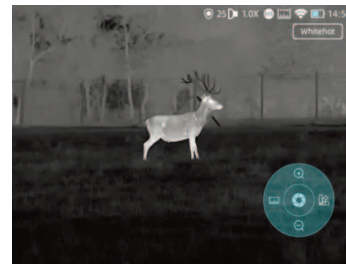
3.3.3.2 AI Ranging

Push the joystick to the left to activate AI rangefinder.



3.3.3.3 Pseudo Color Switch

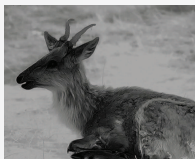
Brief push joystick to right to switch pseudo colors.



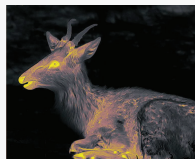
There are totally six pseudo colors
(white hot, black hot, red hot, green, golden, violet) for user choice.



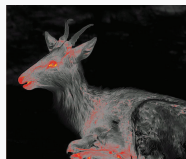
White



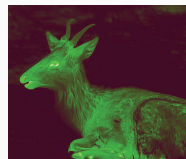
Black



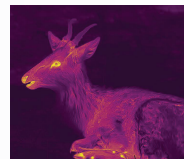
Golden



Red



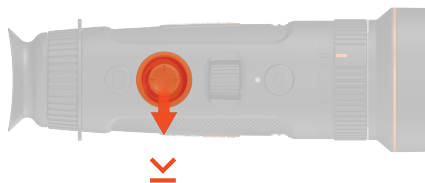
Green



Violet

3.3.3.4 Target Outline Mode

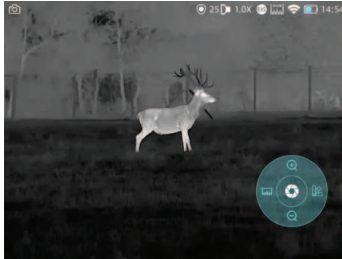
Long push the joystick to right to enter the target outline mode.



3.3.4 Capture/Record

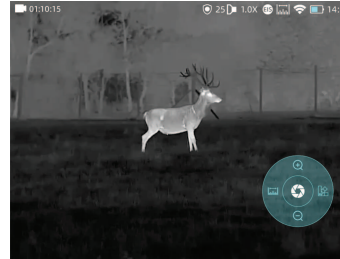
Image Capturing

Press Capture button to take photos. Then the photo icon in the upper left corner will flash once.



Video Recording

Press and hold Capture button to take videos. Then the recording icon starts flashing in the upper left corner, and the recording starts timing. Press and hold again to stop recording.



3.4 Set

Select setting and double-click the joystick to enter setting menu.

Note: Select by moving the joystick, and short press the joystick to confirm the selection.

3.4.1 Setting

Image Capturing

Press to enter the Imaging Setting menu. There are five sub-menus for image setting, which are “Image Mode”, “Sharpness”, “Denoise”, “Brightness” and “Contrast”.

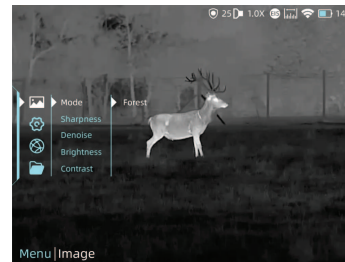
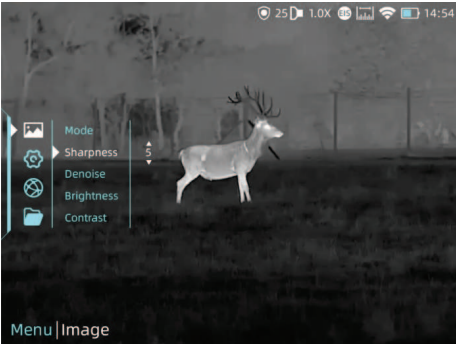




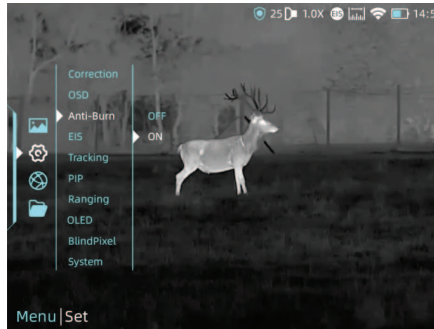
Image Settings		
	Forest	The image details would be enhanced in a way.
Sharpness	0-10	<p>Adjust image sharpness to make the image edge sharper. The recommended value is 5.</p> 
Denoise	0-10	Adjust image noise to make the image cleaner. The recommended value is 5.
Brightness	1-10	Adjust image brightness to make the image brighter. The recommended value is 5.
Contrast	1-10	Adjust image contrast to make the target more prominent in the image. The recommended value is 5.

3.4.2 System Setting

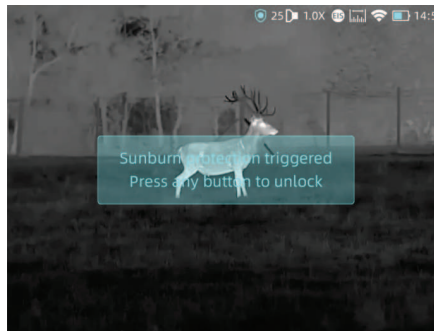
Press joystick to confirm **Setting** to enter the System Setting menu. Select by moving the joystick, and short-press the joystick to confirm the selection.

System Setting		
Correction		<div></div> <p>The image correction mode could be set by Auto or Manual.</p>
OSD	On-screen display	<div></div> <p>Enable this feature to decide if the menu icons display in the recorded videos.</p>

Anti-Burn

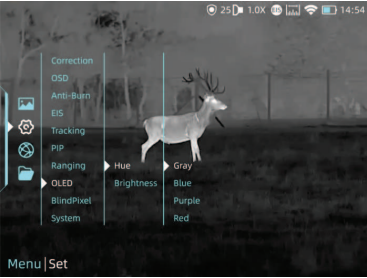
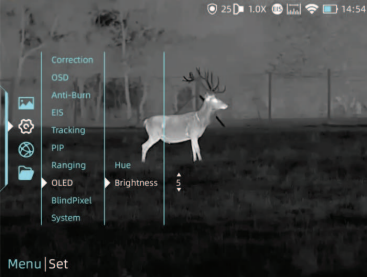
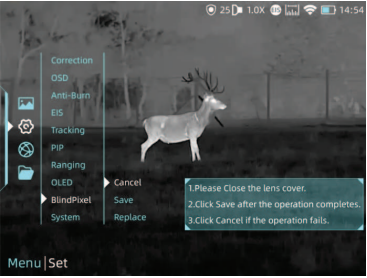





Detector anti-burn function, it could be set by on/off.



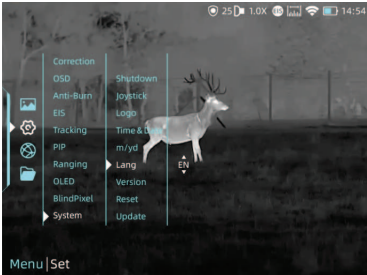


Once it detects harmful rays to the detector, the system will enable protection automatically.

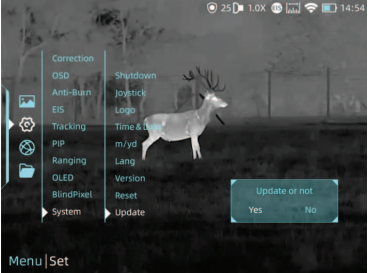
<p>EIS</p>	<p>Electronic Image Stabilization</p>		<p>Electronic Image Stabilization. It could be switched on/off in the system setting.</p>
<p>Tracking</p>			<p>Turn on heat tracking to mark the target with the highest temperature in real time in the screen.</p>
<p>PIP</p>	<p>Picture in picture</p>		<p>In the picture, the image is 2x enlarged from the center of the cross.</p>

<p>OLED</p>	<p>Hue</p>	 <p>Gray, Blue, Purple and Red are optional for OLED hue.</p>
	<p>Brightness</p>	 <p>The brightness could be adjusted here to make the image brighter or darker. The value could be set by 1-5.</p>
<p>BlindPixel</p>		 <p>The blind pixel in the picture can be replaced. We could replace blind pixels, save the current settings or cancel it.</p>

	Shutdown	 <p>The device could be set to shutdown after 30mins, 60mins, or you could turn off the function.</p>
System	Joystick	  <p>Customize the sensitivity range of joystick towards each direction, so it could be better adjusted to every individual needs and requirements.</p>

System	Logo		The logo on the screen could be turned on or turned off.
	Time		Time and Date could be set here.
	Date		
	M/yd		The measuring distance unit could be set by meter or yard.

System	Lang	 <p>System language could be set here.</p>
	Version	 <p>We could check the information of current version here.</p>
	Reset	 <p>The settings of images could be reset here.</p>

System	Update	 <p>You can adjust and upgrade the device system.</p>
--------	--------	--

EIS function: Turn on the EIS function to reduce the impact of body shaking on the image and keep the image stable when observing distant targets.

3.4.3 Network Connection

Select Internet icon and press joystick to enter the Network Connection menu.



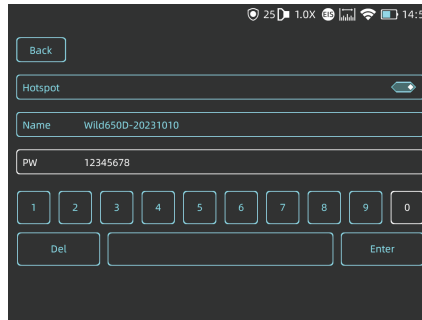
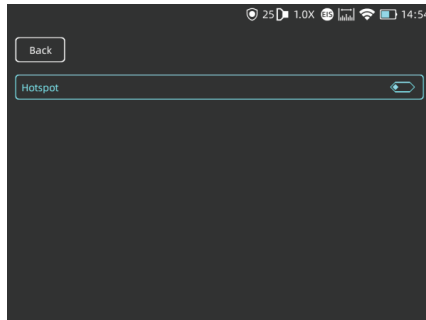
3.4.3.1 App Download

You may download the "ThermTec Outdoor" APP through the QR code shown on the packing box, user manual or below.



3.4.3.2 Connect via Hotspot

- Turn on device's hotspot.



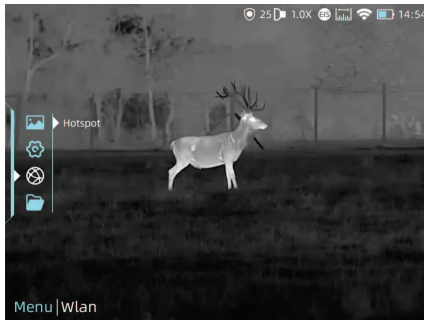
- Connect mobile client with device's hotspot.
- After the connection, you could control devices freely with APP (ThermTec Outdoor).

3.4.4 File Management

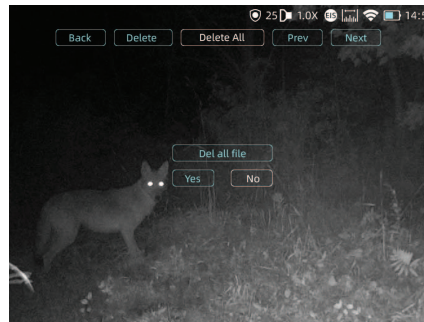
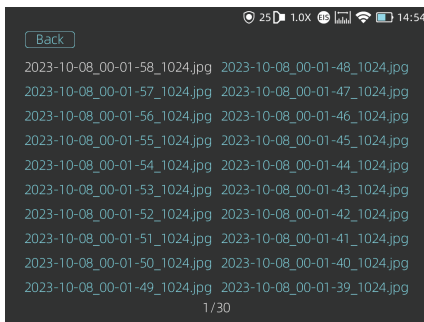
Select Files and press the joystick to enter the Files. Select the image and video sub-menus to view the images and videos and play the videos.

Image Viewing

- Press the joystick to enter image files.

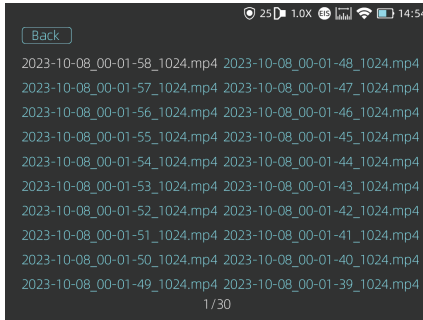


- After selecting a certain image, press joystick to access further operations of the image, we could delete it, check next one or delete all the images.

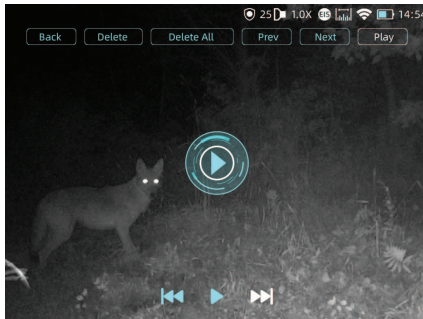


Video Viewing

- Select Record and press joystick to enter video files.
- Choose a certain video and press joystick to check the video.



- Further operations could be accessed here, we could delete it, check next one, pause the video or delete all the videos.



3.5 External Video & Data Reading

Video Output

Use the given AV video cable to output analog video.

Data Reading

When external display is connected, the OLED of the device automatically turns off. Power on the device, use a type-C USB cable to connect with the computer to read the video and image data in the memory.

Note: Videos, images and rav videos taken will be saved separately in folders named “record”, “image” and “rav”

3.6 System Software Upgrade

Wild series thermal imaging monocular supports “**ThermTec Outdoor**” **APP**, which allows you to transmit the image from the thermal imager to the smartphone or tablet via Hotspot in real time mode.

Upgrading via APP

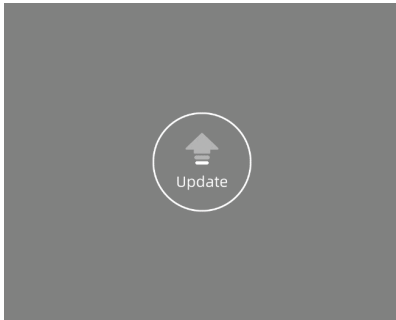
- Open ThermTec Outdoor APP.
- Turn on the hotspot of the device, and connect it with the Mobile phone.
- Select Update on the menu options.
- The downloading and upgradation would be a continuous process if there is an update.
- After finishing the update, the device will reboot.

Upgrading via PC

- Please download the corresponding upgrade package from the official website, www.thermeyertec.com. Connect the device to your PC via a Type-C data cable.



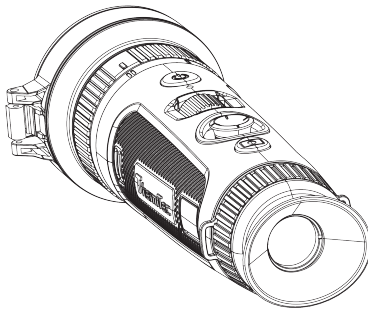
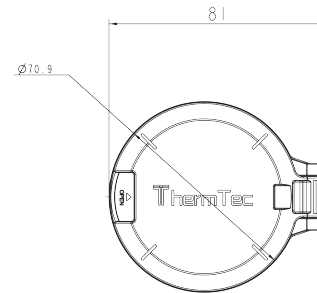
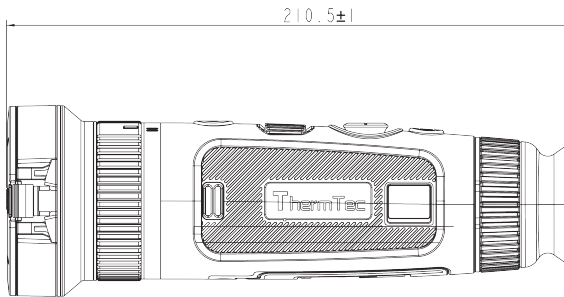
- Copy the related updating firmware to the storage file of Wild. Press joystick to select Update icon, and the system will prompt “Update”.



- Enter version to check firmware version.

4 Technical Data

4.1 Product Size & Drawing



Note: Wild350D, Wild650D are of the same size.

4.2 Specifications

Specifications - Wild

Model	Wild350D	Wild650D
Microbolometer		
Resolution	384x288	640x512
Pixel Pitch	12μm	
NETD	18mK@300k	
Spectral range	8-14μm	
Frame rate	50HZ	
Detection Range	1300m/2600m	
Optics		
Objective lens	25mm/50mm	
F Number	F0.9/F0.9	
m@100m	18.4x13.8/9.2x6.9	30.7x24.6/15.4x12.3
Field of view	10.5° x 7.9°/5.3° x 4°	17.5° x 14°/8.8° x 7.0°
Magnification	2.4X-4.8X	1.4X-2.8X
Digital Zoom	1-4X continuous zoom	
Eye relief	40mm	
Exit pupil	6mm	
Diopter	±5D	
Display		
Type	AMOLED	
Resolution	1024x768	
Display size	0.39 inch	
Color palette	6	
Image mode	Forest/Target	

	Function
Photo/video playback	Yes
Language	Multiple-languages
Built-in Memory	64GB
PIP	Yes
AI Distance Measurement	Yes
Heat Track	Yes
Real-time Notification	Yes
OSD Recording	Yes
Burn prevention	Yes
EIS	Yes

Battery		
Internal battery	Replaceable and Rechargeable Li-ion Battery (18650x1)	
Battery life	10h	8h

Interface	
Type-C	Supports battery charging, data transfer, USB video output
Hotspot	Yes, App remote control

Environment	
Working temperature	-20°C~+50°C
Protection Level	IP67
Weight, g	647.5±15
Size,mm	210(L)x81(W)x71(H)

Accessories	
External Cable	USB cable
Other Accessories	Palm strap/Protective bag/Non-dust cloth and etc.



ThermTec Technology Co., Ltd.
Email: info@thermeyertec.com
Web: www.thermeyertec.com



COPYRIGHT © 2024 ThermTec Technology Co., Ltd. ALL RIGHTS RESERVED.